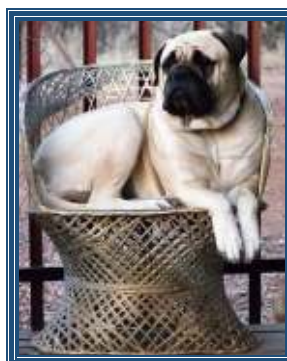


# ***NEWS LETTER MAY 2015*** ***CAPE BULLMASTIFF CLUB***



From the Chair:

## **CONTINUING THE EVALUATION OF THE OFFICIAL BREED STANDARD OF THE KENNEL UNION OF SOUTHERN AFRICA**

### **BULLMASTIFF**

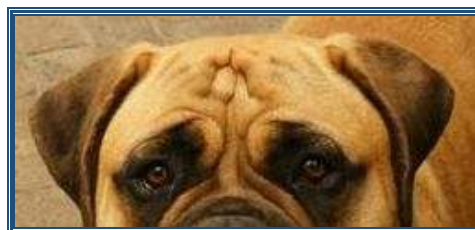
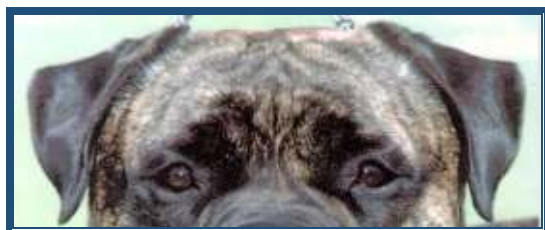
The eyes

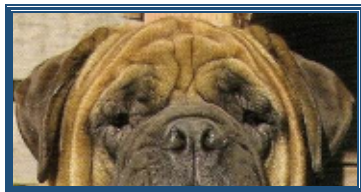
*Dark or hazel, of medium size, set apart the width of the muzzle with furrow between. Light or yellow eyes highly undesirable.*

As the dog had to avoid detection from the moon beams reflecting off its eyes in the night, the darker they were, the better. The size should be in proportion to the head, keeping in mind that an abnormally large eye would be more susceptible to injury.

The shape of the eye is not mentioned in the KUSA Breed Standard but all the experts agree that they should be almond shaped with firm dark eyelids. Droopy or loose eyelids can be indicative of eye problems such as ectropion & 'pagoda eyes' and allow for debris collection.

The position of the eyes, slightly to the sides of the head was deliberate, so that if the poacher clobbered one eye the dogs other eye would suffice.





Are these eye shapes, colouring & settings acceptable? Are the crown lines acceptable? You decide!

### **The ears:**

*V-shaped, folded back, set on wide and high, level of occiput giving square appearance to skull which is most important. Small and deeper in colour than body. Point of ear level with eye when alert. Rose ears highly undesirable.*

The ears should be small to avoid them being grabbed and used as leverage. The set on – wide and high- enabled the Gamekeeper to place his hand between the ears and hence feel the changes in the dog's attitude – wrinkle when alert and nil in repose -without any sounds being made. A Bullmastiff with a forehead full of permanent wrinkle is a reversion to the Bulldog and not desirable.

I think 'folded back' could be altered to 'a V shaped ear folded forward with the crease level with the crown line when alert, and with the inner edge lying close to the cheek. There should be a slightly rounded tip which should be level with the outer edge of the eye when alert'.

No irregularities are desired and this includes the rose ear – again a reversion to the Bulldog – and any unwanted folds in the cartilaginous lobes of the outer ear.

Care should be taken to keep the ears the correct length and to not let them become too long which would be a reversion to the Mastiff and highly undesirable.

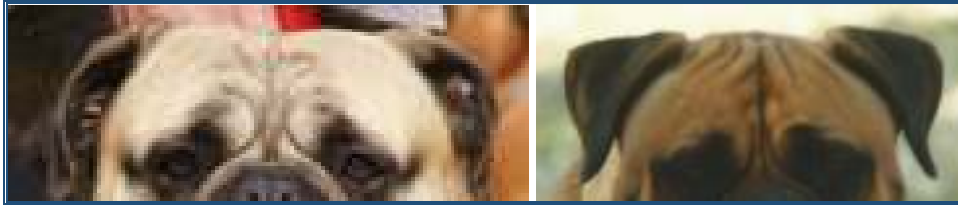
Terrier type ears are also a cause for concern as they detract from the smooth & desired ear set.



Undesirable ear set & eye colour and shape.  
True 'dry head'



Are these ears the correct shape & length?



Are these ears correct – or not? You decide!

### **The Mouth**

*Level desired but slightly undershot allowed but not preferred. Canine teeth large and set wide apart, other teeth strong, even and well placed.*

A good bite was desired to enable the dog to hold his prey. If the canines are therefore set wide apart, the muzzle width would obviously correspond. This important fact is much neglected and all too often Judges award dogs with level incisors but with a narrow jaw and hence setting of teeth, which are often crammed into the mouth and poorly supported. Breeders and Judges should also be aware of the reversion to Bulldog tendency where the bottom jaw is starting to curve upwards. This produces a 'cup' formation for the bottom teeth & is not desirable. A full complement of 42 teeth would be correct but is not mentioned in the KUSA Breed Standard.

There is also the interpretation of the word 'slightly'. The Canadian Breed Standard classes anything more than ¼ inch (imperial measurement) or just less than a centimetre (metric) undershot as a serious fault. I think this is a good guideline to follow.



Undesirable



Desirable



*Wry mouth – highly undesirable*

\*\*\*\*\*

## Bite the Bullet

Helene Nietsch

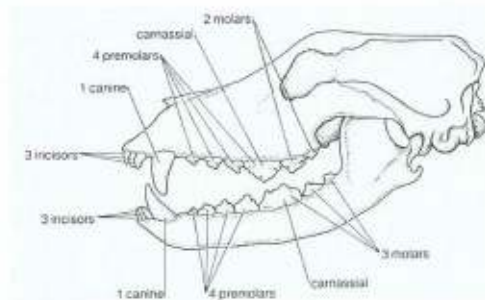
**AKC Bullmastiff Standard: Bite--Preferably level or slightly undershot. Canine teeth large and set wide apart.**

Heredity of teeth and bite is mostly unknown in the canine and is not clear if it is dominant, recessive or polygenic for each abnormality. Teeth and bite faults can however be seen with a simple visual inspection by the age of 12 months. Generally a Bullmastiff's puppy's bottom jaw will continue to grow until they are approximately 9 months old. The top jaw is also in transition and growing during this period. The bite can go either way, from level to undershot or from scissors to overbite, or from scissors to level bite. Mature bite ranges can be overshot to grossly undershot. It is a general observation in some breeds that a puppy which starts off with an overbite, even if it corrects later on, can have a higher incidence of producing more puppies with overbites. Bullmastiff puppies with undershot bites almost never correct themselves



undershot. The bite can go either way, from level to undershot or from scissors to overbite, or from scissors to level bite. Mature bite ranges can be overshot to grossly undershot. It is a general observation in some breeds that a puppy which starts off with an overbite, even if it corrects later on, can have a higher incidence of producing more puppies with overbites. Bullmastiff puppies with undershot bites almost never correct themselves

Abnormal bites vary in levels of severity. Some lines appear to have a higher incidence of bite faults than others and some lines or individuals do produce more incorrect bites than breed averages, leading to a general familial inheritance pattern. Some researchers have suggested that the shortening of the muzzle and lower jaw might be responsible for incorrect bites and missing teeth in the shorter muzzled breeds such as Bullmastiffs, although I've never found missing teeth a problem. It has been noted that dogs with undershot bites can have parents with scissors bites, suggesting that the trait is recessive. After more than 40 years of breeding Bullmastiffs, however, I have found inheritance of bites to be totally random at times, with undershot bite, narrow underjaw producing wide underjaws and perfect bites, and conversely beautiful bites producing bad ones.

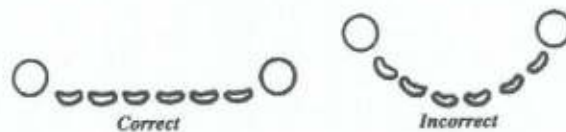


Wry bite



Upper and lower jaw structure appear to be independently inherited traits and even the size of the incisors may play a role in occlusion. Trapped puppy teeth should be removed as they can cause an incorrect misaligned bite. Abnormal size and overly vertical incisors can also create an incorrect bite.

The ABA Bullmastiff Illustrated Standard suggests that there is no reason to penalize a dog that has a reverse scissors or slightly undershot bite. Because of its Bulldog background, however, the Bullmastiff with a reasonable amount of space between the upper and lower canines should only be penalized to the degree of the deviation. Wry mouth, which is a deformity, is unacceptable in Bullmastiffs as in any breed. Large, wide set canines in the Bullmastiff are desirable and give the dog a greater holding ability, and a wider, very desirable broad underjaw. The teeth should be large and strong, with the canine teeth wide apart, and the six small teeth in front, between the canines, in an even, level row. Narrow underjaws and curved-patterned incisors are very undesirable, as is the reversion to the Bulldog type of bite. The two jaw-bones should terminate in a normal perpendicular level in the front and the lower jaw should not protrude beyond the upper jaw nor bend slightly upwards. The repandus (bent upward) part of the underjaw with the lower lip (sometimes called the chin) must never rise above the front of the upper lip. In judging the Bullmastiff I see varying degrees of bites, but mainly good bites with wide underjaws and straight teeth. Missing teeth and dropped incisors are not uncommon, especially in the older dog. I have noticed over the years that the canine teeth have gotten smaller, which I do believe is something that should be addressed in breeding programs. Without the holding power of the canines, the dog could not hold as effectively as he might with those big canines. Years ago you never saw small canines, and it was impressive to see a Bullmastiff's mouth with huge canines and level bites. The evolution of the breed to a less moderate and more "bully" appearance has led to the reversion to the more Bulldog type of bite, although the perfect bite can and should be accomplished with the best of heads.



As a breeder first, then a judge, in judging a Bullmastiff's bite, as long as the bite is not wry or grossly undershot with canine teeth jutting out of the mouth, I have a great deal of tolerance for an imperfect bite knowing that both the dog and bitch could do their job. It is interesting to observe that even with a bad bite, a bitch can sever the umbilical cord, which is not done with incisors but the molars and when a Bullmastiff jumps up and grabs your arm, he does it with his molars not the incisors. When mentoring new judges I never recommend going back to the bite in making a decision, and that there are far more important structural and type characteristics to take into consideration.

All rights reserved.  
Nicky Robertson 2015

To be continued



## THE NAME OF THE GAME



### BE IMAGINATIVE WHEN NAMING PUPPIES

And now for a bit of harmless nonsense – since human parents are now naming their offspring with out of the ordinary names such as Autumn, Sunday, Rose, Paris, North, Bluebell and so on - here are some ideas for unusual doggy names.....

#### FOREIGN & ROMANTIC

**Astra** - Latin for stars



**Amaroo** - Aborigine

**Alors** - French

**Amore** - Italian

**Atticus** - A stunning Bullmastiff



#### LITERATURE & ART

**Bilbo Baggins** - One of JR Tolkien's hobbits

**Browning** - the poet

**Barraud** - The artist of the painting 'His Master's Voice'



**Byron** - the poet

**Boatswain** - his dog's name

#### HISTORICAL NAMES

**Caesar** - A Roman Emperor

**Casca** - A Roman soldier or a brindle stud



**Cleopatra  
Clinton**

**- The queen of Egypt  
- An American President**

## **UNUSUAL**

---

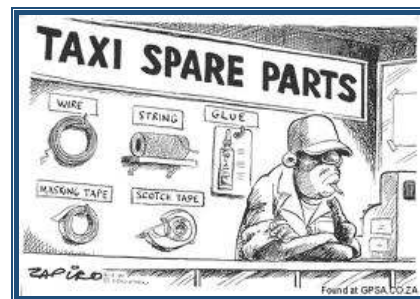
**Don't do that  
Dammit  
Digby**

## **TRANSPORTATION**

---



**Electra glide in blue - the ultimate bike or rider  
(Bernhard – take note☺)**



**En nog twintig - The ultimate SA taxi**

**Elantra  
ETA**

**- Try it!  
- Estimated Time of Arrival**

## **HOLIDAY DESTINATIONS**

---

**Far North  
Fiji  
Fort Knox**



**Free State in Afrikaans**

## **FASHION**

---

**Gucci  
Gabana  
Gitano**

**- we all know Gucci & Gabana  
- a brand of clothing**

## BEAUTY

---

**Helen** - The one whose face launched a thousand ships – not the DA ☺



**Helena** - Paint & powder  
**Helena** - Character in 'A Midsummer Night's Dream'  
**Him** - The name of LBJ's beagle (all dogs are things of beauty)



## POLITICAL

---

**Indira** - of India  
**Ian** - of Rhodesia

## PAIRS

---

**Jy & Julle**  
**Jug & Juice**

**Jack & Jill**



\*\*\*\*\*

**The Cape Bullmastiff Club is presenting a Character & Breed Assessment for Bullmastiffs (BA) over the weekend 12&13 September 2015.**

**Should you wish your dog to be tested accordingly please contact the Chair at [info@capebullmastiffclub.co.za](mailto:info@capebullmastiffclub.co.za).**



The entrant must be over 18 month of age, be in good health, have HD & ED grading's from a SAVA registered scrutinizer, KUSA registration and a positive identification (tattoo or microchip).

## NEW MEMBERS

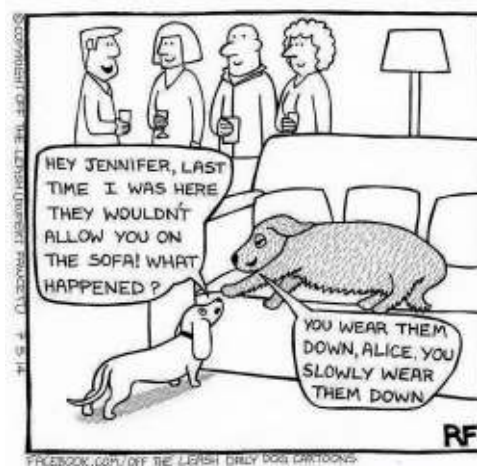
And welcome to our new members - the Bryants from Plettenberg Bay – who sent in these lovely photos of their brindle boy



Mark Linley from Kloof in KZN

Peter & Jenny Norman who also hail from Kloof in KZN

## FUNNIES



## AND WHAT HAVE WE HERE?



The information in this magazine is confined to its members. Statements or opinions may be expressed in this communication that is personal to the writers and do not necessarily represent the views of the Club

Cape Bullmastiff Club  
Post Net Suite 65  
P/Bag X15  
Somerset West  
7129

[info@capebullmastiffclub.co.za](mailto:info@capebullmastiffclub.co.za) & /or [www.capebullmastiffclub.co.za](http://www.capebullmastiffclub.co.za)

KUSA 1151 Est 2011



Fun in abundance ☺

**SOME TIMES YOU HAVE TO GIVE UP ON PEOPLE  
– NOT BECAUSE YOU DON'T CARE –  
BUT BECAUSE THEY DON'T!**